



**Spotted
Penguin**

Fabrics



Tel: **01480 220310**
Fax: **01480 220307**

Spotted Penguin
Edison House, Edison Close, Ransomes Europark
Ipswich, IP3 9GU
www.spottedpenguin.co.uk

Fabrics

There is wide choice of fabrics available and it is important that you select the right fabric for the application as well as creating the perfect finish to the chairs.

Environmentally Friendly Fabrics

There are a growing number of options available for those looking for an eco-friendly fabric solution. Wool, bast fibres and recycled polyester are at the forefront of this development and offer not only excellent environmental credentials but also excellent design choice.

High wool content/100% wool

It's natural and renewable and has been around for millions of years. And it will be here long after the oil-based synthetics have gone. But it's not just environmental, it's the best performance fibre there is, with multiple smart abilities which have never been matched by man-made fibres. It has a microscopic armour like coating that preserves its beautiful appearance for longer. It has natural crimp which prevents flattening and resists wear, while its luxurious drape and stretch make it the perfect accompaniment to the curves and contours of sculptured furniture shapes.

It enjoys a natural cell structure, making it a "feel good" breathable fibre which can absorb and evaporate moisture for total user comfort. And it's fire safe thanks to its high moisture and nitrogen content, it's difficult to ignite, forms a char against flaming and in a severe fire situation will not melt, drip or give off toxic fumes.

Key benefits:

- Rapidly renewable
- Grown, not man-made
- Totally biodegradable
- Low energy footprint
- Low CO2 impact
- Appearance retention
- Inherently soil hiding
- Does not attract dust & dirt
- Stretch and recovery
- Breathable
- Insulating
- Fire retardant

Bast Fibres

Renewable fibres include nature's most well-known environmental textile, pure new wool, and bast fibres from plants such as nettles and hemp. Because they're protein or plant based, they will decompose fully for back to earth compostability.

Bast fibres occur in the structural material of a plant. They are located between the outer bark (epidermis) and the central woody core. The fibres are extracted using an environmentally preferable mechanical decortication process instead of separating them from the woody core by soaking them in chemicals or water. They can be used on their own, but are the perfect accompaniment to pure new wool. Most bast fibres are strong and elastic making them ideal as a textile fibre. They also have in-built fire retardant properties. When blended with wool, they create an unrivalled naturally fire retardant fabric which meets the main UK contract flammability standard (Crib 5medium Hazard) without any chemical FR treatment.

Recycled Polyester

We're all learning to recycle more rather than throwing things to landfill. Polyester is made by reacting two petro-chemicals together, ethylene glycol and dimethyl naphtalate, to create polyethylene terephthalate (PET). It's the same material used to make plastic drinks bottles which are produced and discarded in massive volumes. Allied to this post-consumer waste is a mass of post-industrial waste created by manufacturers before their PET products ever get to consumers. Both forms of waste are used to make recycled polyester fabrics, removing the need to drill, refine and transport crude oil, separating it into petro-chemicals and adding other additives to turn it into the fibre that can be weaved.

Life cycle assessment conclusively demonstrates that fabrics manufactured from 100% recycled polyester have significantly less environmental impact than those manufactured from virgin polyester.

Fabric Bands and Recommendations

Not all fabrics are suitable for soft seating / reception seating. Opposite shows all fabrics grouped in the relevant pricing bands together with recommended usage. We cannot guarantee the finish of any chair that is ordered in fabric that is not recommended for that application.

Seating Guarantees

All seating products are guaranteed for a period related to the usage and the structural capability of the chair. Please review the usage matrix at the back of the catalogue for guidance on each chair's individual guarantee period.

Regardless of usage, all seating products are guaranteed against manufacturing defects, except for upholstery, castors and mechanisms which are subject to usage related wear and tear. The suggested maximum weight loading and hourly usage should not be exceeded. The guarantee is effective from the day the chair leaves the factory and the supplier reserves the right not to apply the guarantee in cases of inappropriate use or when the chair has been tampered with by a third party or interventions by non-authorized personnel.



Seating Guarantees - Made to Order

All products that show this symbol are made to your specification and to order. It is our policy that once these products have been ordered they cannot be cancelled.



Fabric bands & application

Pricing Bands						Application		Environmental		Fire	
Manufacture	Range	Band A	Band B	Band C	Band D	Band E	Task Seating	Soft Seating	Environment	Fire rating Crib 5	
Camira	Xtreme	A					Yes		100% Re-cycled polyester	Cigarette and match / Crib 5 / M1/B1	
Camira	Advantage	A					Yes		60% Polypropylene 30% wool 10% viscose	Low hazard cigarette and match	
Camira	Phoenix	A					Yes		100% Polyester	Cigarette and match	
Camira	Sprint		B				Yes	Yes	100% Polyester	Cigarette and match	
Camira	X2		B				Yes	Yes	100% Re-cycled polyester	Cigarette and match / medium hazard	
Camira	Mainline plus		B				Yes	Yes	67% Virgin wool 37% flame retardant viscose	Cigarette and match / Crib 5	
Camira	Chateau		B				Yes		100% Flame Retardant Polypropylene	BS 7176:2007 Medium Hazard	
Camira	Manhattan		B				Yes		100% Recycled Polyester	Cigarette and match	
Camira	Vita		B				Yes	Yes	Surface 95.5% pvc 1.5%pu Substrate 50% polyester/ 50% cotton	Low hazard cigarette and match / Crib 5	
Camira	Mainline Flax			C			Yes	Yes	70% vigin wool 30% Flax	Cigarette and match / medium hazard	
Camira	Urban			C			Yes		Re-cycled polyester	Cigarette and match / medium hazard /M1/B1	
Camira	24/7				D		Yes	Yes	50% polyimide 33% wool 10% visil 7% viscose	Cigarette and match / Crib 5	
Camira	Aquarius				D		Yes	Yes	100% Virgin wool	Cigarette and match	
Camira	Blazer quilt channel and hour glass				D		Yes	Yes	Task seating / soft seating	BS 7176:2007 Low Hazard	
Camira	Hemp				D		Yes	Yes	60% Wool 40% True hemp	Cigarette and match / medium hazard	
Camira	Craggan				D		Yes	Yes	100% Pure New Wool	BS 7176:2007 Medium Hazard	
Camira	Blazer				D		Yes	Yes	100% Virgin wool	Cigarette and match	
Camira	Halcyone collection				D		Yes	Yes	100% Polyester with flame retardant coating	Crib 5 / Anti Microbal	
Camira	Intervene plain and textured				D		Yes	Yes	100% Recycled Polyester face	BS 5852:2006 Section 4 Ignition Source 5	
Camira	Landscape Balance and Contract				D		Yes		95% Virgin Wool, 5% Polyamide	Cigarette and match	
Camira	Marvel				D		Yes	Yes	Surface 100% Polyurethane Substrate 70% Polyester 30% Cotton	Cigarette and match / medium hazard	
Camira	Oxygen				D		Yes		90% Virgin Wool, 10% Polyamide	BS 7176:2007 Low Hazard	
Camira	Synergy				D		Yes	Yes	95% Virgin Wool, 5% Polyamide	BS 7176:2007 Low Hazard	
Camira	Velvetesse				D		Yes	Yes	100% Polyimide	Low hazard cigarette and match / Crib 5	
Camira	Silk					E	Yes	Yes	67% Virgin wool 22% Flax 11% silk	Cigarette and match / medium hazard / Crib 5	
Agua	Libra	A					Yes	Yes	100% Treated polyester	BS7176 CRIB5 / Anti bacterial / anti fungal	
Agua	Paint Pot		B				Yes	Yes	2% pu 59% pvc 29% cotton 10% polyester	BS7176 CRIB5 / Anti bacterial / anti fungal	
Agua	Taurus			C			Yes	Yes	2.5% pu 97.5% pvc substrate 50%pes 50%cotton	Crib 5 / anti bacterial / anti fungal	
Agua	Nova			C			Yes	Yes	100% Polyester	BS7176 CRIB5 / Anti bacterial / anti fungal	
Agua	Lunar			C			Yes	Yes	74% pvc 2% pu 12% polyester 12% cotton	BS7176 CRIB5 / Anti bacterial / anti fungal	
Agua	Sark			C			Yes	Yes	88% Treated polyester 12% treated nylon	BS7176 CRIB5 / Anti bacterial / anti fungal	
Agua	Cashmir			C			Yes	Yes	100% Treated polyester	BS7176 CRIB5 / Anti bacterial / anti fungal	
Bradbury	Arizona	A					Yes		100% Polyester	Cigarette and match / BS5852 source 5	
Bradbury	Stirling	A					Yes		70% Polypropylene, 30% wool	BS EN 1021 - 1: 2006 (Cigarette and Match)	
Bradbury	Omega plus	A					Yes	Yes	100% Polyester	Cigarette and match / BS5852 source 5	
Bradbury	Pyra	A					Yes		100% Polypropylene	BS EN 1021 - 1&2: 2006 (passes cigarette & match)	
Bradbury	Fizz		B				Yes		100% Polyester	Cigarette and match / BS5852 source 5	
Bradbury	Flamblend		B				Yes	Yes	45% Wool, 45% FR Modacrylic, 10% Nylon	BS 5852: 2006 Ignition source 5	
Bradbury	Figaro		B				Yes	Yes	85% Polyvinyl Chloride, 13% Cotton, 2% Polyurethane	BS 5852: Section 4 Ignition Source 5	
Bradbury	Torro		B				Yes	Yes	85% Polyvinyl Chloride, 13% Cotton, 2% Polyurethane	BS 5852: Section 4 Ignition Source 5	
Bradbury	Torro plus			C			Yes	Yes	54.2% Polyurethane, 26.3% Polyester 19.5% Cotton	BS 5852:Section 4 Ignition Source 5 FMVSS 302 Motor Vehicle	
Bradbury	Carnival			C			Yes	Yes	80% Wool 20% nylon	Cigarette and match / BS5852 source 5	
Bradbury	Blenhiem				D		Yes	Yes	80% Wool 20% nylon	Cigarette and match / BS5852 source 5	
Bradbury	Blenhiem check				D		Yes	Yes	90% Wool 10% nylon	Cigarette and match	
Dams	Fresh vinyl	A					Yes	Yes	Pvc-co (78% - 22%)	Crib 5 / anti bacterial / anti fungal	
Gabriel	See manufacturers web site					P.O.A			Please check fabric suppliers web site as fabric ranges vary	Please check fabric manufacturer web site	
Kvadrat	See manufacturers web site					P.O.A			Please check fabric suppliers web site as fabric ranges vary	Please check fabric manufacturer web site	
Bute	See manufacturers web site					P.O.A			Please check fabric suppliers web site as fabric ranges vary	Please check fabric manufacturer web site	
Cheiftain vinyl	See manufacturers web site					P.O.A	Yes	Yes	Please check fabric suppliers web site as fabric ranges vary	Please check fabric manufacturer web site	
Ambia	See manufacturers web site					P.O.A	Yes	Yes	Please check fabric suppliers web site as fabric ranges vary	Please check fabric manufacturer web site	
Crest leather	See manufacturers web site					P.O.A	Yes	Yes	Please check fabric suppliers web site as fabric ranges vary	Please check fabric manufacturer web site	
Andrew Muirhead leather	See manufacturers web site					P.O.A	Yes	Yes	Please check fabric suppliers web site as fabric ranges vary	Please check fabric manufacturer web site	
Bridge of Weir leather	See manufacturers web site					P.O.A	Yes	Yes	Please check fabric suppliers web site as fabric ranges vary	Please check fabric manufacturer web site	

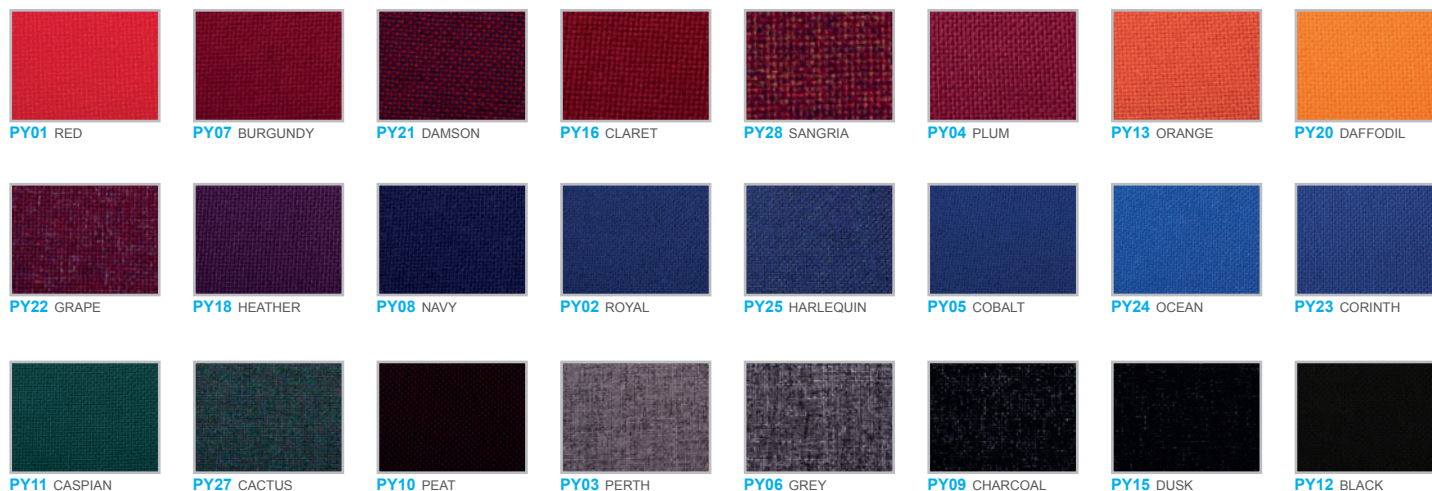


PY06 GREY

Features & Benefits

Composition	100% FR Polypropylene
Weight	225grms/mt ²
Abrasion	Tested in accordance with BS EN ISO 12947-1:1999 as modified by Annex F of BS2543:2006 to 60,000 rubs Martindale, with 5 year guarantee.
Flame Retardancy	BS 7176 2007 Low Hazard, BS EN 1021 -1:2006 (cigarette) & BS EN 1021-2:2006 (match)
Light Fastness	5+ (ISO 105 – B02:1999)
Fabric care	Clean using a proprietary upholstery shampoo
Colour matching	Batch to batch variations in shade may occur within commercial tolerances.

If you require a Bradbury fabric sample please contact www.bradburyfabrics.com



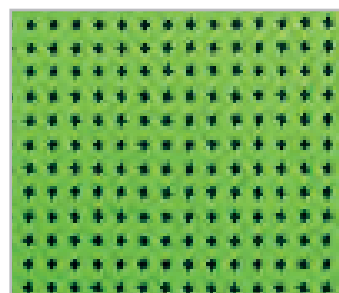
OMP604 LAGOON

Features & Benefits

Composition	100% Polyester – non metallic dyestuffs
Weight	310grms/mt ²
Abrasion	Tested in accordance with BS 2543 2004 to 100,000 rubs Martindale and has been graded SEVERE CONTRACT suitable for many types of upholstery applications, with 5 year guarantee.
Flame Retardancy	BS EN 1021-1:2006 (cigarette), BS EN 1021-1:2006 (match), BS 7176:2007 Low Hazard & BS 7176:2007 Medium Hazard ignition source Crib 5
Light Fastness	6 (ISO 105 – B02:1999)
Fabric care	Clean using a proprietary upholstery shampoo
Colour matching	Batch to batch variations in shade may occur within commercial tolerances.

If you require a Bradbury fabric sample please contact www.bradburyfabrics.com





052 REACTION

Features & Benefits

Composition 100% Polyester – none metallic dyestuffs
Weight 350grms/mt²
Abrasion Tested in accordance with BS2543:2004 to 80,000 rubs martindale, with a 5 year guarantee
Flame Retardancy BS 7176 2007 Low Hazard, BS EN 1021 -1:2006 (cigarette) & BS EN 1021-2:2006 (match)
 BS 7176 2007 Medium Hazard, BS 5852:2006 ignition source crib 5.
Light Fastness 5 (ISO 105 – B02:1999)
Fabric care Clean using a proprietary upholstery shampoo
Colour matching Batch to batch variations in shade may occur within commercial tolerances.

If you require a Bradbury fabric sample please contact www.bradburyfabrics.com



053 ATOMIC



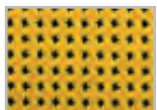
056 ENERGY



062 DRAKE



058 CAPRI



051 SAFFRON



050 MELTDOWN



055 FUSION



060 BURGON



054 SCARLET



057 RUBINE



059 AURA



061 MARDI GRAS



064 JASMINE



065 VERONA



068 BALTIC



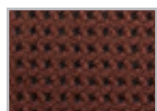
069 INDIGO



063 DOVE



066 LAVA



067 CHESTNUT



FLM200 PHEONIX

Features & Benefits

Composition 45% Wool, 45% FR Modacrylic, 10% Nylon
Weight 414grms/mt²
Abrasion Tested in accordance with BS EN ISO 12947-2:1999 as modified by Annex F of BS 2543:2004 To 100,000 rubs Martindale. Meets the requirements of BS 2543:2004 and has been graded SEVERE CONTRACT and is suitable for all types of upholstery applications, with 5year guarantee.
Flame Retardancy BS EN 1021-1:2006 (cigarette), BS EN 1021-1:2006 (match), BS 7176:2007 Low Hazard & BS 7176:2007 Medium Hazard ignition source Crib 5
Stain Repellance Treated as standard with stain repellent treatment.
Fastness to rubbing Wet 4+ & Dry 4+ (ISO 105-x12:2002)
Light Fastness 5+ (ISO 105 – B02:1999)
Fabric care Clean using a proprietary upholstery shampoo
Colour matching Batch to batch variations in shade may occur within commercial tolerances.

If you require a Bradbury fabric sample please contact www.bradburyfabrics.com



FLM340 KIRKO



FLM117 BAMBOO



FLM331 RED RUM



FLM028 HONEYSUCKLE



FLM059 TANGERINE



FLM016 CARNATION RED



FLM101 ARIZONA



FLM228 ROUGE



FLM039 MOSS



FLM037 MINERAL



FLM095 ROYAL



FLM021 DELPHINIUM



FLM205 PORCELAIN



FLM008 ARTIC



FLM029 IRIS



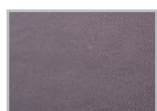
FLM018 CINNEBAR



FLM216 RIVIERA



FLM011 BALMORAL



FLM025 GUNMETAL



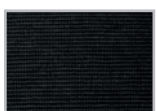
FLM110 DARK GREY



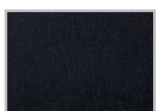
FLM116 PEAT



FLM115 CHARCOAL



FLM338 WEST TIP



FLM055 SOOT

Fabric Camira - Xtreme Plus Band A



YS168 TORTUGA

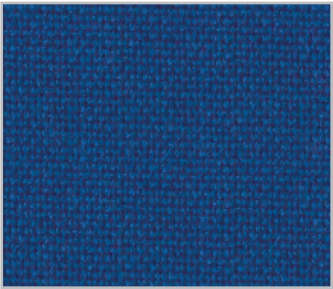
Features & Benefits

Composition 100% Recycled Polyester FR. Non metallic dyestuffs
 Recycled / EU Flower certified
 *Abrasion Resistance 10 year guarantee / 100,000 Martindale cycles (full details available)
 Flammability BS EN 1021 - 1 : 2006 (cigarette), BS EN 1021 - 2 : 2006 (match), BS 7176 : 2007 Low Hazard, BS 5852 : 2006 Section 4 Ignition Source 5, BS 7176 : 2007 Medium Hazard, UNI 8456 & UNI 9174 Class 1, NF - P - 92 - 507 M1, NF D 60-013:2006, DIN 4102 B1
 Hazard Note: Flammability performance is dependent on foam used.
 *Light Fastness 6 (ISO 105 - B02:1999)
 *Fastness to Rubbing Wet: 4 Dry: 4 (ISO 105 - X12:2002)
 Maintenance Washable to 60°C. Vacuum regularly. Wipe clean with a damp cloth or shampoo using proprietary upholstery shampoo.
 Colour Matching Batch to batch variations in shade may occur within commercial tolerances.

*Tested in accordance with BS 2543:1995/2004. Further information available on request.



Fabric Camira - Advantage Band A

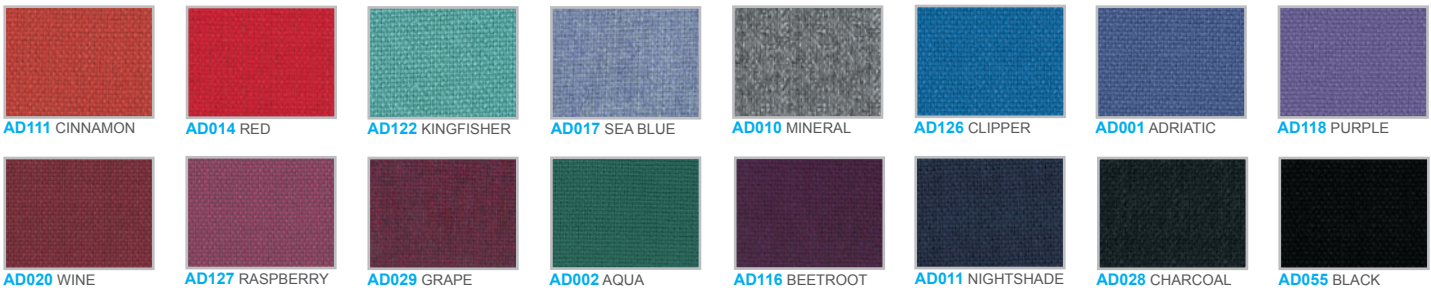


AD004 COBALT

Features & Benefits

Composition 60% Polypropylene, 30% Virgin Wool, 10% Viscose
 *Abrasion Resistance 5 year guarantee / 90,000 Martindale cycles (full details available)
 Flammability BS EN 1021 - 1 : 2006 (cigarette), BS EN 1021 - 2 : 2006 (match), BS 7176 : 2007 Low Hazard Note: Flammability performance is dependent on foam used.
 *Light Fastness 5 (ISO 105 - B02:1999)
 *Fastness to Rubbing Wet: 4 Dry: 4 (ISO 105 - X12:2002)
 Maintenance Vacuum regularly. Wipe clean with a damp cloth or shampoo using proprietary upholstery shampoo.
 Colour Matching Batch to batch variations in shade may occur within commercial tolerances.

*Tested in accordance with BS 2543:1995/2004. Further information available on request.



Fabric Camira - Phoenix Band A



YP107 SANDSTORM

Features & Benefits

Composition 100% Polyester. Non metallic dyestuffs
 *Abrasion Resistance 5 year guarantee / 100,000 Martindale cycles (full details available)
 Flammability BS EN 1021 - 1 : 2006 (cigarette), BS EN 1021 - 2 : 2006 (match), BS 7176 : 2007 Low Hazard Note flammability performance is dependent on foam used
 *Light Fastness 6 (ISO 105 - B02:1999)
 *Fastness to Rubbing Wet: 4 Dry: 4 (ISO 105 - X12:2002)
 Maintenance Vacuum regularly. Wipe clean with a damp cloth or shampoo using proprietary upholstery shampoo.
 Colour Matching Batch to batch variations in shade may occur within commercial tolerances.

*Tested in accordance with BS 2543:1995/2004. Further information available on request.



Fabric Camira - Mainline Plus Band B

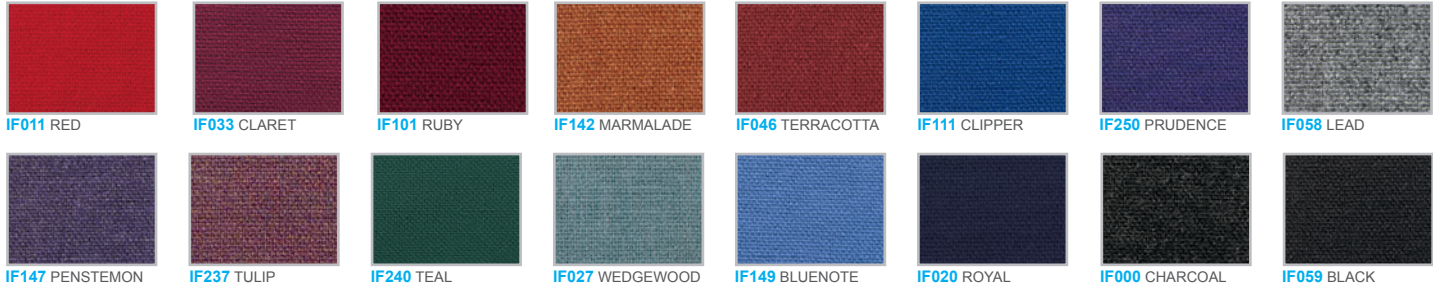


IF084 JUNIPER

Features & Benefits

Composition 67% Virgin Wool, 20% Flame Retardant Viscose, 13% Viscose
***Abrasion Resistance** 5 year guarantee / 75,000 Martindale cycles (full details available)
Flammability BS EN 1021 - 1 :2006 (cigarette), BS EN 1021 - 2:2006 (match), BS 7176 :2007 Low Hazard, BS 5852 :2006 Section 4 Ignition Source 5, BS 7176 :2007 Medium Hazard
***Light Fastness** Hazard Note: Flammability performance is dependent on foam used.
 5 (ISO 105 - B02:1999)
***Fastness to Rubbing** Wet: 4 Dry: 4 (ISO 105 - X12:2002)
Maintenance Vacuum regularly. Wipe clean with a damp cloth or shampoo using proprietary upholstery shampoo.
Colour Matching Batch to batch variations in shade may occur within commercial tolerances.

*Tested in accordance with BS 2543:1995/2004. Further information available on request.



IF011 RED

IF033 CLARET

IF101 RUBY

IF142 MARMALADE

IF046 TERRACOTTA

IF111 CLIPPER

IF250 PRUDENCE

IF058 LEAD

IF147 PENSTEMON

IF237 TULIP

IF240 TEAL

IF027 WEDGEWOOD

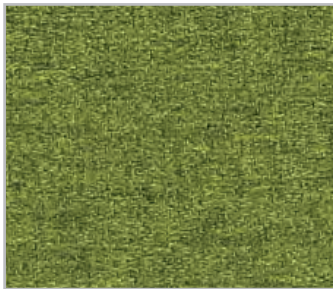
IF149 BLUENOTE

IF020 ROYAL

IF000 CHARCOAL

IF059 BLACK

Fabric Camira - X2 Plus Band B



AK005 ALEGBRA

Features & Benefits

Composition 100% Recycled Polyester. Non metallic dyestuffs
Second Nature Recycled, including closed loop content
***Abrasion Resistance** 5 year guarantee / 100,000 Martindale cycles (full details available)
Flammability BS EN 1021 - 1:2006 (cigarette), BS EN 1021 - 2:2006 (match), BS 7176 : 2007 Low Hazard, BS 5852 : 2006 Section 4 Ignition Source 5, BS 7176 : 2007 Medium Hazard, UNI 8456 & UNI 9174 Class 1, Certification pending: NF - P - 92 - 507 M1, NF D 60-013:2006, DIN 4102 B1
***Light Fastness** 6 (ISO 105 - B02:1999)
***Fastness to Rubbing** Wet: 4 Dry: 4 (ISO 105 - X12:2002)
Maintenance Washable to 60°C. Vacuum regularly. Wipe clean with a damp cloth or shampoo using proprietary upholstery shampoo.
Colour Matching Batch to batch variations in shade may occur within commercial tolerances.

*Tested in accordance with BS 2543:1995/2004. Further information available on request.



AK013 SUBTRACT

AK014 MULTIPLY

AK015 DIVIDE

AK011 MEDIAN

AK012 ADD

AK003 FRACTION

AK001 RATIO

AK002 POLYGON

AK017 FORMULA

AK016 PERCENTAGE

AK020 NUMBER

AK019 POSITIVE

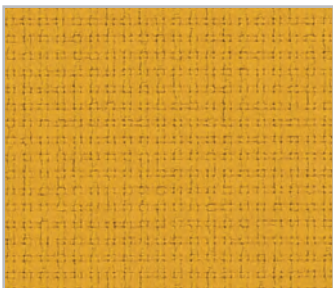
AK006 VALUE

AK008 CALCULUS

AK009 ACUTE

AK010 METRIC

Fabric Camira - Urban Plus Band C



YN148 AVENUE

Features & Benefits

Composition 100% Recycled flame retardant Polyester. Non metallic dyestuffs
***Abrasion Resistance** 5 year guarantee / 100,000 Martindale cycles (full details available)
Flammability BS EN 1021 - 1:2006 (cigarette), BS EN 1021 - 2:2006 (match), BS 7176 : 2007 Low Hazard, BS 5852 : 2006 Section 4 Ignition Source 5, BS 7176 : 2007 Medium Hazard, UNI 8456 & UNI 9174 Class 1, NF - P - 92 - 507 M1, NF D 60-013:2006, DIN 4102 B1
***Light Fastness** 6 (ISO 105 - B02:2013)
***Fastness to Rubbing** Wet: 4 Dry: 4 (ISO 105 - X12:2002)
Maintenance Washable to 60°C. Vacuum regularly. Wipe clean with a damp cloth or shampoo using proprietary upholstery shampoo.
Colour Matching Batch to batch variations in shade may occur within commercial tolerances.



YN200 UPTOWN

YN212 DISTRICT

YN027 PRECINCT

YN076 HIGHRISE

YN079 CONGESTION

YN204 GRAFFITI

YN082 CONURBATION

YN202 PENTHOUSE

YN108 LIVING

YN091 BENCH

YN205 INTERSECTION

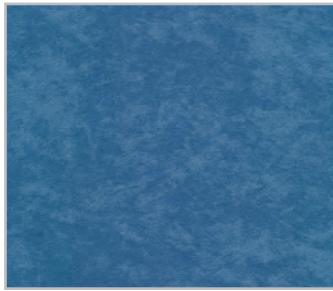
YN211 FREEWAY

YN201 LOFT

YN160 BOULEVARD

YN209 STREETSMART

YN009 SUBWAY



LI-ROYAL

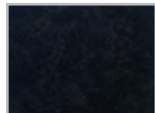
Features & Benefits

Market Sectors : Office, Break Out, Hospitality, Healthcare

Composition 100% Treated Polyester. REACH compliant, Phthalate free
 Abrasion Resistance >100,000 Martindale
 Flammability BS EN 1021 - 1 :2006 0 & 1, BS 7176 :2007 Crib 5 Medium Hazard
 Note flammability performance is dependent on foam used
 Waterproof Hydrostatic Head > 1 metre

Anti-microbial Resistant to microbial and fungal growth including Salmonella, E.Coli, C.Difficile
 Stain resistant Stains will become harder to remove the longer they are left untreated

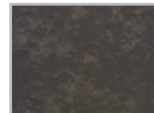
Maintenance Vacuum regularly. Wipe clean with a damp microfiber cloth. Can be spot cleaned with mild Hypochlorite solutions (10,000 ppm of available chlorine) for infection control purposes. Refer to fabric care sheets on the Agua website for full details
 Colour Matching Batch to batch variations in shade may occur within commercial tolerances.



LI-BLACK



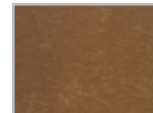
LI-MIDNIGHT



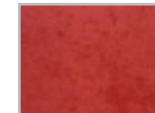
LI-CHARCOAL



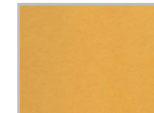
LI-BROWN



LI-TAN



LI-RED



LI-HONEY



LI-BOTTLE



PP-SCARLET

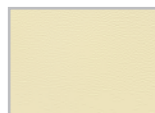
Features & Benefits

Market Sectors : Office, Break Out, Hospitality, Healthcare

Composition 2% PU, 59% PVC, 29% Cotton, 10% Polyester. REACH compliant, Phthalate free
 Abrasion Resistance >100,000 Martindale
 Flammability BS EN 1021 - 1 :2006 0 & 1, BS 7176 :2007 Crib 5 Medium Hazard
 Note flammability performance is dependent on foam used
 Waterproof

Anti-microbial Resistant to microbial and fungal growth including Salmonella, E.Coli, C.Difficile
 Maintenance Vacuum regularly. Wipe clean with a damp microfiber cloth. Can be spot cleaned with mild Hypochlorite solutions

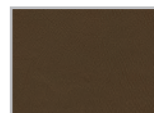
(10,000 ppm of available chlorine) for infection control purposes. Refer to fabric care sheets on the Agua website for full details.
 Clothing dyes and biro may cause permanent staining
 Colour Matching Batch to batch variations in shade may occur within commercial tolerances.



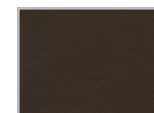
PP-IVORY



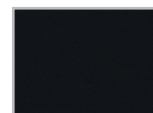
PP-BEIGE



PP-CHESTNUT



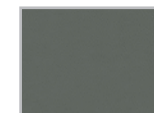
PP-BROWN



PP-BLACK



PP-SILVER



PP-GRAPHITE



PP-YELLOW



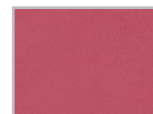
PP-MUSTARD



PP-ORANGE



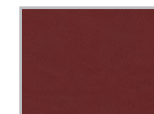
PP-BURNT ORANGE



PP-PINK



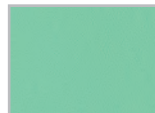
PP-ROSE



PP-CLARET



PP-PURPLE



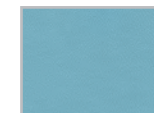
PP-SPEARMINT



PP-LIME



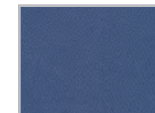
PP-GRASS



PP-SKY



PP-AZURE

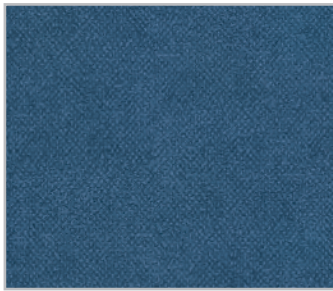


PP-ROYAL



PP-BLUE

Fabric Agua - Lunar Aquarius Vinyl Band B



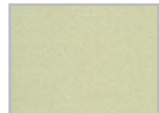
AQ CORNFLOWER

Features & Benefits

Market Sectors : Office, Break Out, Hospitality, Healthcare

Composition 2% PU, 74% PVC, 12% Cotton, 12% Polyester. REACH compliant, Phthalate free
 Abrasion Resistance >100,000 Martindale
 Flammability BS EN 1021 - 1 :2006 0 & 1, BS 7176 :2007 Crib 5 Medium Hazard
 Note flammability performance is dependent on foam used
 Waterproof

Anti-microbial Resistant to microbial and fungal growth including Salmonella, E.Coli, C.Difficile
 Maintenance Vacuum regularly. Wipe clean with a damp microfiber cloth. Can be spot cleaned with mild Hypochlorite solutions (10,000 ppm of available chlorine) for infection control purposes. Refer to fabric care sheets on the Agua website for full details.
 Clothing dyes and biro may cause permanent staining
 Colour Matching Batch to batch variations in shade may occur within commercial tolerances.



AQ CREAM



AQ GREEN



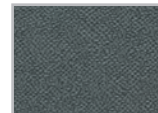
AQ APPLE



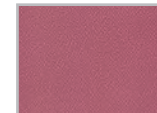
AQ TEAL



AQ SKY BLUE



AQ GREY

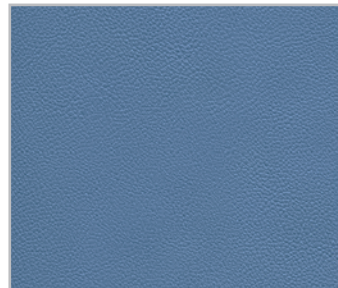


AQ ROSE



AQ RED

Fabric Agua - Lunar Scorpio Vinyl Band B



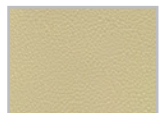
SC CORNFLOWER

Features & Benefits

Market Sectors : Office, Break Out, Hospitality, Healthcare

Composition 2% PU, 74% PVC, 12% Cotton, 12% Polyester. REACH compliant, Phthalate free
 Abrasion Resistance >100,000 Martindale
 Flammability BS EN 1021 - 1 :2006 0 & 1, BS 7176 :2007 Crib 5 Medium Hazard
 Note flammability performance is dependent on foam used
 Waterproof

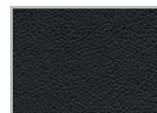
Anti-microbial Resistant to microbial and fungal growth including Salmonella, E.Coli, C.Difficile
 Maintenance Vacuum regularly. Wipe clean with a damp microfiber cloth. Can be spot cleaned with mild Hypochlorite solutions (10,000 ppm of available chlorine) for infection control purposes. Refer to fabric care sheets on the Agua website for full details.
 Clothing dyes and biro may cause permanent staining
 Colour Matching Batch to batch variations in shade may occur within commercial tolerances.



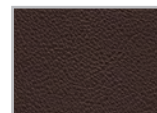
SC CREAM



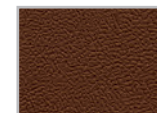
SC GREY



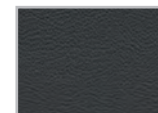
SC BLACK



SC DARK BROWN



SC CHESTNUT



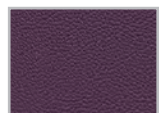
SC DARK GREY



SC NAVY



SC EMERALD



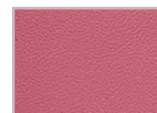
SC PLUM



SC RED



SC CRIMSON



SC ROSE



SC GREEN



SC APPLE



SC SKY BLUE



SC TEAL

Fabric Agua - Cashmir Band C



CA-CERISE

Features & Benefits

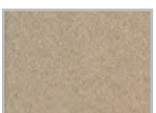
Market Sectors : Office, Break Out, Hospitality, Healthcare

Composition 100% Treated Polyester. REACH compliant, Phthalate free
 Abrasion Resistance >80,000 Martindale
 Flammability BS EN 1021 - 1 :2006 0 & 1, BS 7176 :2007 Crib 5 Medium Hazard
 Note flammability performance is dependent on foam used
 Waterproof Hydrostatic Head > 1 metre

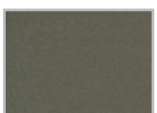
Anti-microbial Resistant to microbial and fungal growth including Salmonella, E.Coli, C.Difficile
 Stain resistant Stains will become harder to remove the longer they are left untreated
 Maintenance Vacuum regularly. Wipe clean with a damp microfiber cloth. Can be spot cleaned with mild Hypochlorite solutions (10,000 ppm of available chlorine) for infection control purposes. Refer to fabric care sheets on the Agua website for full details
 Colour Matching Batch to batch variations in shade may occur within commercial tolerances.



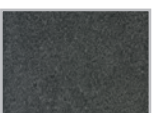
CA-SLATE



CA-STONE



CA-MUSHROOM



CA-CHARCOAL



CA-SAND



CA-CITRUS



CA-WEDGWOOD



CA-RUBY



TA-TEAL

Features & Benefits

Market Sectors : Office, Break Out, Hospitality, Healthcare

Composition 2% PU, 74% PVC, 12% Cotton, 12% Polyester. REACH compliant, Phthalate free

Abrasion Resistance >400,000 Martindale

Flammability BS EN 1021 - 1 :2006 0 & 1, BS 7176 :2007 Crib 5 Medium Hazard (7 colours available as Crib 7 High Hazard) Note flammability performance is dependent on foam used

Waterproof

Anti-microbial Resistant to microbial and fungal growth including Salmonella, E.Coli, C.Difficile

Maintenance Vacuum regularly. Wipe clean with a damp microfiber cloth. Can be spot cleaned with mild Hypochlorite solutions

(10,000 ppm of available chlorine) for infection control purposes. Refer to fabric care sheets on the Agua website for full details. Clothing dyes and biro may cause permanent staining

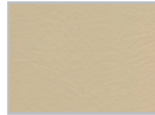
Colour Matching Batch to batch variations in shade may occur within commercial tolerances.



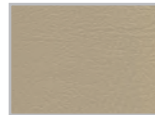
TA-POLAR



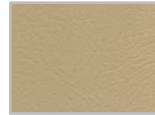
TA-PARCHMENT



TA-LATTE



TA-MUSHROOM



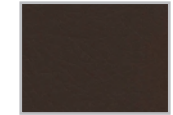
TA-SAND



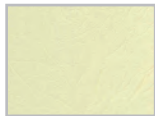
TA-STONE



TA-BARK



TA-COCOA



TA-CREAM



TA-CARAMEL



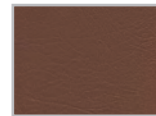
TA-FUDGE



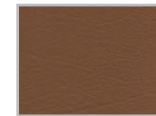
TA-CHOCOLATE



TA-TAUPE



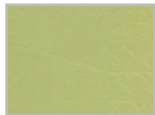
TA-MOCHA



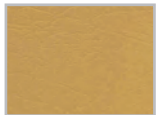
TA-SADDLE



TA-TAN



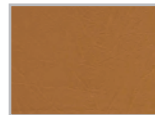
TA-FENNEL



TA-TOFFEE



TA-PEBBLE



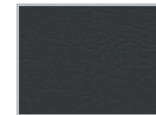
TA-SPICE



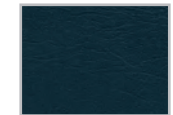
TA-HEATHER



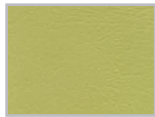
TA-SLATE



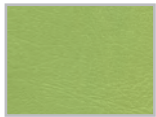
TA-BLACK



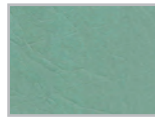
TA-MIDNIGHT



TA-CITRUS



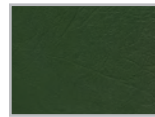
TA-GRASS



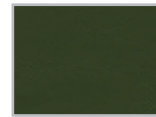
TA-DUCK EGG



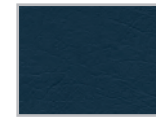
TA-OCEAN



TA-CONIFER



TA-MOSS



TA-ENSIGN



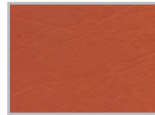
TA-BERRY



TA-WEDGWOOD



TA-CHILLI



TA-BRICK



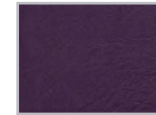
TA-OX



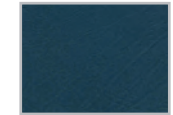
TA-ROSEWOOD



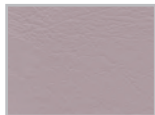
TA-AUBERGINE



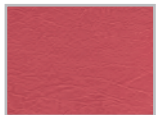
TA-BRAMBLE



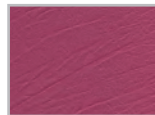
TA-SAPPHIRE



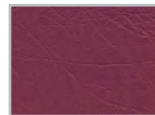
TA-LILAC



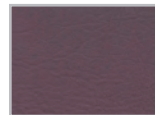
TA-ROSE



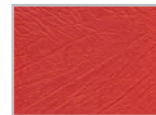
TA-ORCHID



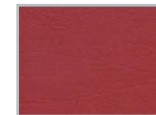
TA-GARNET



TA-DAMSON



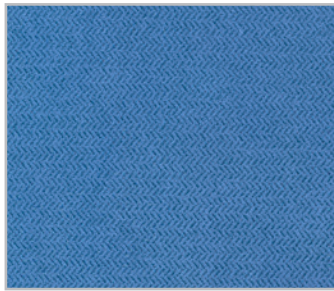
TA-TOMATO



TA-CARMINE



TA-WINE



NO-WEDGWOOD

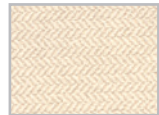
Features & Benefits

Market Sectors : Office, Break Out, Hospitality, Healthcare

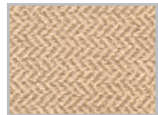
Composition 100% Treated Polyester. REACH compliant, Phthalate free
 Abrasion Resistance >100,000 Martindale
 Flammability BS EN 1021 - 1 :2006 0 & 1, BS 7176 :2007 Crib 5 Medium Hazard
 Note flammability performance is dependent on foam used
 Waterproof Hydrostatic Head > 1 metre

Anti-microbial Resistant to microbial and fungal growth including Salmonella, E.Coli, C.Difficile
 Stain resistant Stains will become harder to remove the longer they are left untreated

Maintenance Vacuum regularly. Wipe clean with a damp microfiber cloth. Can be spot cleaned with mild Hypochlorite solutions (10,000 ppm of available chlorine) for infection control purposes. Refer to fabric care sheets on the Agua website for full details
 Colour Matching Batch to batch variations in shade may occur within commercial tolerances.



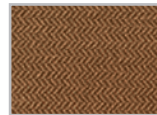
NO-VANILLA



NO-OATMEAL



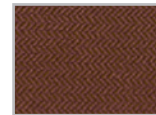
NO-LATTE



NO-MINK



NO-WALNUT



NO-CHESNUT



NO-RAVEN



NO-FENNEL



NO-SAFFRON



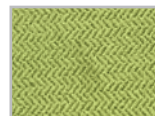
NO-SAGE



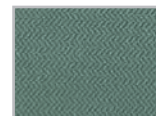
NO-LEMON



NO-DILL



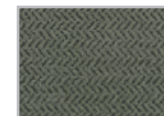
NO-LIME



NO-SEA GRASS



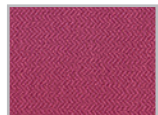
NO-MOSS



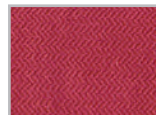
NO-TAUPE



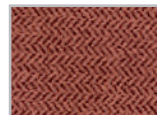
NO-LAVENDER



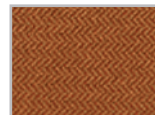
NO-RASPBERRY



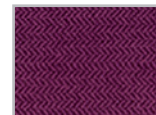
NO-POPPY



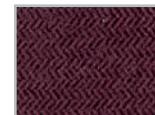
NO-RUSSET



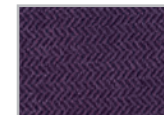
NO-BURNT ORANGE



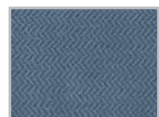
NO-CLARET



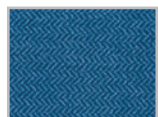
NO-BURGUNDY



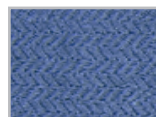
NO-DAMSON



NO-DOVE



NO-ROYAL



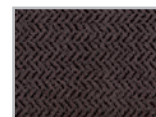
NO-ORION



NO-BLUEBELL



NO-GRAPE



NO-NUTMEG



NO-EBONY



SA-ZEST

Features & Benefits

Market Sectors : Office, Break Out, Hospitality, Healthcare

Abrasion Resistance >40,000 Martindale
 Flammability BS EN 1021 - 1 :2006 0 & 1, BS 7176 :2007 Crib 5 Medium Hazard
 Note flammability performance is dependent on foam used
 Waterproof Hydrostatic Head > 1 metre

Anti-microbial Resistant to microbial and fungal growth including Salmonella, E.Coli, C.Difficile
 Stain resistant Stains will become harder to remove the longer they are left untreated

Maintenance Vacuum regularly. Wipe clean with a damp microfiber cloth. Can be spot cleaned with mild Hypochlorite solutions (10,000 ppm of available chlorine) for infection control purposes. Refer to fabric care sheets on the Agua website for full details
 Colour Matching Batch to batch variations in shade may occur within commercial tolerances.



SA-CLOUD



SA-LAVENDER



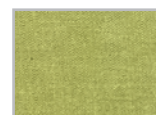
SA-TAUPE



SA-MOCHA



SA-GREY



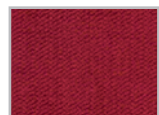
SA-GREEN



SA-SKY BLUE



SA-TEAL



SA-RED



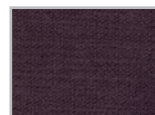
SA-GRAPHITE



SA-MAUVE



SA-MARINE



SA-WINE



SA-CHARCOAL

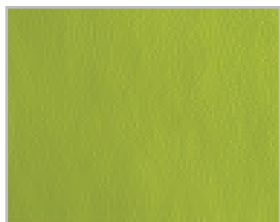


74465 OCEAN

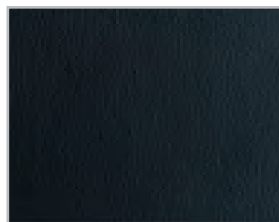
Features & Benefits

Composition	PVC-CO (78% -22%)
Abrasion	ISO 5470-2 In excess 40.000
Flammability	BS 5852 sources 0 & 1, EN 1021-1-2 part 1 & 2 BS 5852 source crib 5 IMO A.652(16) Cigarette & Match NF-P92-503 M2
Light Fastness	EN ISO 105-B02 6+ grade
Rub Fastness Veslic	ISO 11640. 1000 rubs felt dry no staining, 1000 rubs felt wet no change 1000 rubs felt with no damage, alkaline perspiration solution ISO 11641
Maintenance	Clean with a damp soapy sponge and lukewarm water. Only use alkaline free soap.
Colour Matching	Batch to batch variations in shade may occur within commercial tolerances.

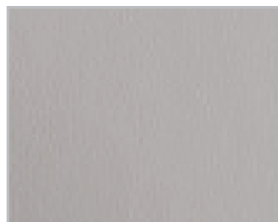
*Tested in accordance with BS 2543:1995/2004. Further information available on request.



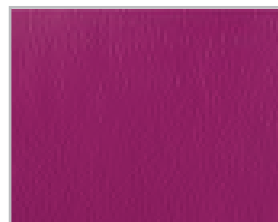
72123 ZEST



00110 NERO



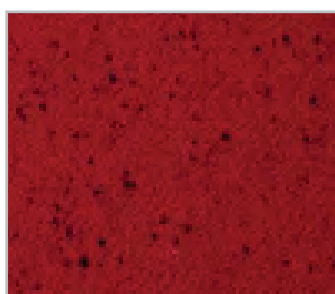
51809 ATOMIUM



65105 RASPBERRY



24638 SUNRISE



718 REDDITCH

Features & Benefits

Composition	90% Wool / 10% Nylon
Weight	520grms/mt ² (730grms/linear mt)
Abrasion	Tested in accordance with BS EN ISO 5470-2:2003 Method 1 to 170,000 rubs martindale Suitable for many types of upholstery applications, with 5 year guarantee.
Flame Retardancy	BS EN 1021-1:2006 (cigarette), BS EN 1021-1:2006 (match), BS 7176:2007 Low Hazard. Can be FR treated with ZIRPRO treatment to achieve BS 7176:2007 Medium Hazard BS 5852:Section 4 Ignition source 5 – please specify when ordering. BS EN ISO 105 – B02:Method 3 to standard – 4
Light Fastness	Superior stain resistance and water repellancy with inherent Teflon treatment.
Teflon Treated	
Fabric care	Vacuum regularly, professionally dry clean or wipe clean with a damp cloth
Colour matching	Batch to batch variations in shade may occur within commercial tolerances.

Further colours are available upon request, please view the full collection on www.bradburyfabrics.com



744 CHIPPING



735 WELWYN



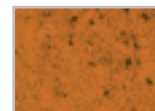
719 SHARNBROOK



751 WOBURN



730 KENNINGTON



707 CHESHAM



746 NORTON



702 AYLESBURY



703 BANBURY



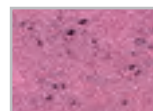
714 MARLSBOROUGH



749 SOUTHAM



709 DAVENTRY



745 BLETCHLEY



750 BRACKLEY



731 MALMESBURY



706 CHARLBURY



701 AMERSHAM



736 WINSON



727 DAPPLEY



734 STUDLEY



733 OAKLEY



723 WOODSTOCK



712 HASTINGS



704 BASSETT



Tel: **01480 220310**
Fax: **01480 220307**

Spotted Penguin
Edison House, Edison Close, Ransomes Europark
Ipswich, IP3 9GU
www.spottedpenguin.co.uk